

# PIT INSTRUCTION & TRAINING

## School Catalogs

Pit Crew U - Pit Weld U - Volume 3.0  
Published 2.05.2025

# 2025 - 2026



PIT Instruction and Training is an educational institution that offers technical training in two disciplines that relate to the motorsports industry, welding, and pit crew performance. Contain herein are the educational catalogs for both educational programs, Pit Crew U and Pit Weld U.

**PIT Instruction & Training**  
**156 Byers Creek Road**  
**Mooresville, NC 28117**  
**Phone: 704-799-3869**  
**[www.VisitPIT.com](http://www.VisitPIT.com)**

\*Licensed as a NC Proprietary School since July, 2013



## Table of Contents

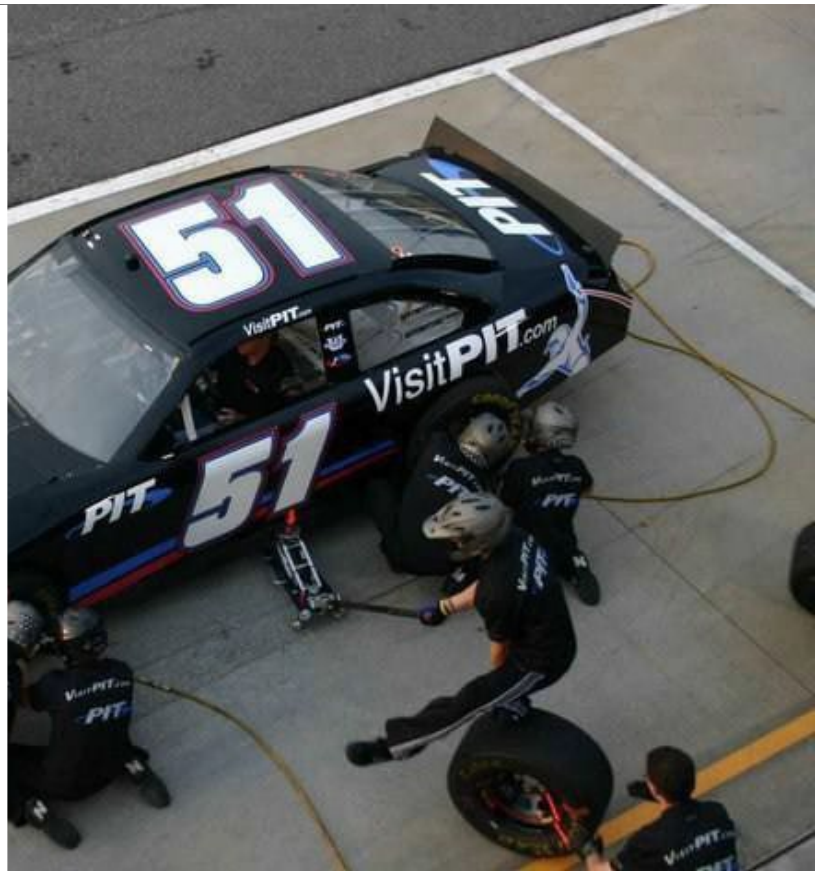
<b>Pit Crew U Catalog .....</b>	<b>4</b>
<b>COURSE DESCRIPTION .....</b>	<b>5</b>
<b>ACADEMIC CALENDARS.....</b>	<b>5</b>
<b>BOARD MEMBERS.....</b>	<b>6</b>
<b>FACULTY .....</b>	<b>6</b>
<b>ENROLLMENT QUALIFICATIONS.....</b>	<b>6</b>
<b>ENROLLMENT PROCESS .....</b>	<b>6</b>
<b>GRANTING CREDIT, GRIEVANCE &amp; REINSTATEMENT .....</b>	<b>6</b>
<b>CODE OF CONDUCT .....</b>	<b>7</b>
<b>TRANSCRIPTS .....</b>	<b>8</b>
<b>ADVERSE WEATHER POLICY.....</b>	<b>8</b>
<b>GRADING AND CERTIFICATE OF COMPLETION .....</b>	<b>8</b>
<b>COURSE OF STUDY &amp; CLOCK HOURS .....</b>	<b>11</b>
<b>PCU - 8 WEEK SCHEDULE .....</b>	<b>12</b>
<b>CLASS MATERIALS NEEDED.....</b>	<b>12</b>
<b>TUITION REFUNDS.....</b>	<b>13</b>
<b>PIT CREW U FEES .....</b>	<b>13</b>
<b>PIT CREW U PAYMENT PLAN TERMS .....</b>	<b>13</b>
<b>Pit Weld U Catalog.....</b>	<b>14</b>
<b>INTRODUCTION.....</b>	<b>15</b>
<b>ACADEMIC CALENDAR .....</b>	<b>16</b>
<b>BOARD MEMBERS .....</b>	<b>16</b>
<b>FACULTY .....</b>	<b>16</b>
<b>ENROLLMENT QUALIFICATIONS.....</b>	<b>17</b>
<b>ENROLLMENT PROCESS .....</b>	<b>17</b>

<b>ELIGIBILITY REQUIREMENTS .....</b>	<b>17</b>
<b>GRANTING CREDIT .....</b>	<b>17</b>
<b>CODE OF CONDUCT .....</b>	<b>17</b>
<b>TRANSCRIPTS .....</b>	<b>18</b>
<b>CURRICULUM .....</b>	<b>18</b>
<b>ADVERSE WEATHER POLICY .....</b>	<b>20</b>
<b>ATTENDANCE .....</b>	<b>20</b>
<b>GRADING SYSTEM .....</b>	<b>20</b>
<b>COURSE OF STUDY &amp; CLOCK HOURS .....</b>	<b>21</b>
<b>CLASS MATERIALS NEEDED .....</b>	<b>22</b>
<b>TUITION REFUNDS.....</b>	<b>23</b>
<b>PIT WELD U FEES .....</b>	<b>24</b>
<b>FACILITY FLOOR PLANS .....</b>	<b>25</b>
<b>ACKNOWLEDGEMENT .....</b>	<b>28</b>

# Pit Crew

Volume 8.0- Revised 02.04.2024

# 2025 - 2026



Achieve your dream of a career in motorsports through Pit Crew U. Join the ranks of PCU alumni who consistently win not just races but championships. Enroll today and put yourself on the fast track to racing!!

**PIT Instruction & Training, LLC**  
**156 Byers Creek Road**  
 **Mooresville, NC 28117**  
**Phone : 704-799-3869**  
**[www.VisitPIT.com](http://www.VisitPIT.com)**



## COURSE DESCRIPTION

Pit Crew U. (PCU) is an eight-week class. Each class is assigned an identifying number e.g. PCU 154. The curriculum for each class listed in the “Academic Calendars” below is the same regardless of its number. The PCU curriculum was developed with the input of industry-leading pit crew coaches and coordinators and is taught by former PCU graduates and NASCAR pit crew professionals.

During the eight weeks of class a student learns each pit crew position. Before the class ends, the student focuses on one primary position. Position skills are taught incrementally, to ensure understanding of each skill. By week eight, all primary position’s skills are combined, allowing the student to perform a complete high-speed pit stop on a moving car.

Students are prepared for potential NASCAR pit crew careers with additional class instruction on pit crew terminology, pit area set up and preparation, pit crew tool care and maintenance, and basic race car servicing. A student’s class success is measured on Attendance, Tests/Quizzes, Athletic and Pit Stop Performance.

Successful students earn a Certification of Completion that serves as a pre-requisite for admission to our advanced pit crew course. Or the certificate can be offered to area race teams as proof of training.

## ACADEMIC CALENDARS

<b>Class:</b>	<b>Dates</b>	<b>Holiday Closings</b>
<b>2024 Pit Crew U Class Schedule</b>		
Pit Crew U 158	01/08/24 – 02/28/24	
Pit Crew U 159	03/04/24 – 04/24/24	
Pit Crew U 160	04/26/24 – 06/21/24	05/27/24 - Memorial Day
Pit Crew U 161	06/24/24 – 08/19/24	07/4/24 – Independence Day
Pit Crew U 162	08/26/24 – 10/16/24	09/02/24 - Labor Day
Pit Crew U 163	10/21/24 – 12/18/24	11/28/24-11/29/24 – Thanksgiving
<b>2025 Pit Crew U Class Schedule</b>		
Pit Crew U 164	01/06/25 – 02/26/25	
Pit Crew U 165	03/03/25 – 04/23/25	
Pit Crew U 166	04/28/25 – 06/23/25	05/26/25 - Memorial Day
Pit Crew U 167	06/30/25 – 08/20/25	07/04/25 – Independence Day
Pit Crew U 168	08/25/25 – 10/20/25	09/01/25 - Labor Day
Pit Crew U 169	10/27/25 – 12/17/25	11/27/25-11/28/25 – Thanksgiving
<b>2026 Pit Crew U Class Schedule</b>		
Pit Crew U 170	01/05/26 – 02/25/26	
Pit Crew U 171	03/02/26 – 04/22/26	04/6/2026 – Easter Monday
Pit Crew U 172	04/27/26 – 06/22/26	05/25/26 - Memorial Day
Pit Crew U 173	06/29/26 – 08/19/26	07/05/26 – Independence Day

## BOARD MEMBERS

Thomas C. DeLoach – Managing Partner  
Myra DeLoach - Partner

## FACULTY

Adam Merrell – Director of Motorsports

## ENROLLMENT QUALIFICATIONS

The school shall require graduation from a public or private or state registered home high school as a prerequisite to enroll in a certificate or diploma course offered by the school. Exceptions to this requirement may be made for students who hold a certificate of high school equivalency or for non-high school graduates who are 18 years of age or older who have taken the TABE (Test of Adult Basic Education), required by the State of North Carolina. A copy of the high school equivalency certificate or test results shall be kept in each student's record. The school shall not permit students of high school age to attend the school during the time that high schools are in regular session, except in individual cases approved by the student's high school principal.

## ENROLLMENT PROCESS

Persons enrolling in the Pit Crew U program are required to submit a completed application along with a non-refundable Application Fee due at the time of application. In addition, a Program Fee to cover all associated costs of the program is due **prior** to the start date of the scheduled program. Due to the experiential nature of the class, required equipment, and content, Pit Instruction and Training, LLC requires payment of the Application Fee and Program Fee in full prior to the scheduled start date of the program. Students may enroll any time prior to and including the first day of class.

## GRANTING CREDIT, GRIEVANCE & REINSTATEMENT

### Granting Credit

Due to the specific nature of our industry, we do not accept any type of prior educational or work experience as credit towards Pit Crew U.

### Grievance

Direct any student grievance to your course instructor. If a matter remains unsolved submit a written complaint including complaint and desired outcome to Elizabeth DeLoach, Director of Administration, Pit Instruction & Training. After a student has exhausted Pit Crew U's grievance procedures, if a matter remains unresolved, a formal complaint may be filed with the online Student Complaint Portal. The Portal is hosted by the Licensure Division of the University of North Carolina System Office. The Portal can be found online at: <https://studentcomplaints.northcarolina.edu>. Veterans and other eligible people may report a grievance against the school to the NCSAA and VA. "The North Carolina State Approving Agency (SAA) is the approving authority of education and training programs for North Carolina. Our office investigates complaints of GI Bill® beneficiaries. While most complaints should initially follow the school grievance policy, if the situation cannot be resolved at the school, the beneficiary should contact our office via email [saa@milvets.nc.gov](mailto:saa@milvets.nc.gov)."

### Reinstatement

Following a student's release or return from military service Pit Weld U is committed to providing the



basic services and support as set forth in the Higher Education Opportunity Act. A student is entitled to reinstatement to Pit Crew U in the next open calendar class without having to re-qualify for admission if the student returns after a cumulative absence of not more than five years, and the student provides notice of intent to return to the institution not later than three years after completing the service period. A student who is admitted to Pit Crew U may be allowed to defer enrollment to the program due to military service to the next open calendar class.

## **CODE OF CONDUCT**

Pit Instruction & Training reserves the right to impose a variety of disciplinary actions, including permanent termination from school, on any student whose behavior—on or off campus—violates the Code of Conduct outlined in this Catalog. To clarify, school administrators will determine in their sole discretion if the Code of Conduct has been violated. Disciplinary action may be taken under this Code of Conduct regardless of whether that conduct also involves an alleged or proven violation of law. Specific instances of misconduct include, but are not limited to the following:

### **Drugs & Alcohol**

Drug use, substance abuse or possession of drugs, drug paraphernalia or alcohol while on or off Pit Instruction & Training property or during school activities is not tolerated. As a condition of acceptance, Pit Instruction & Training students agree to random and for-cause drug testing throughout their attendance as set forth in Pit's Substance Abuse Prevention Policy included in this guide.

### **Guns and Weapons**

Possession of guns or weapons on campus (in parking lots, vehicles, etc.) is not permitted. Any knife with a blade longer than 2 inches is considered a weapon and not permitted on campus.

### **Illegal Actions**

Any action in violation of federal, state, or local laws on or off campus is not tolerated.

### **Disruptive Behavior**

No type of disruptive behavior is tolerated. Disruptive behavior includes, but is not limited to, obscene language, profanity, derogatory comments, racial or sexist remarks, sleeping in class, or leaving the classroom or shop area without permission.

### **Fighting**

Bullying, harassment, fighting, manufacturer bashing, threats, or other acts of violence between students or directed toward Pit Instruction & Training staff is not tolerated on or off campus.

### **Vandalism**

Vandalism of School or personal property of students or staff on or off campus is not tolerated.

### **Theft**

Stealing or possessing stolen property on or off campus is not tolerated.

### **Possession of Stolen Property**

Possessing property known to be stolen that may be identified as property of Pit Instruction & Training or any other person or business is not tolerated.

### **Destruction of Property**

Destruction of School or personal property of students or staff on or off campus is not tolerated.

### **Civil Disturbance**

Any conduct that involves disturbing the peace of the School and/or the local community is not tolerated. Disturbing peace under such circumstances can be defined as, but is not limited to, disorderly conduct and failure to comply with the directives of law enforcement or Institute officials.

This includes loud exhaust and stereos.

## **TRANSCRIPTS**

Pit Instruction & Training maintains a full record of all course attempts for each student. Only the student's successfully completed courses will appear on the official transcript. However, all attempts will be reflected in the student course listing. Within two weeks of graduation, each student will receive two copies of his or her official transcript. Additional certified copies may be obtained anytime thereafter for a nominal charge by contacting the school. Unofficial transcripts are available free of charge. The school reserves the right to not issue or award graduation documents and transcripts to a student until all financial obligations to the school have been satisfied.

- a. Job Competencies – There are 5 key job competencies that are required to perform a Motorsports pit-stop. These 5 jobs are as follows:
- b. Front Changer – travel to the right, get in position, 5 off, pull tire, 5 on, travel to the left, 5 off, pull tire, 5 on.
- c. Carrier – travel to the right with 2 tires, drop off the right front tire, go to right rear and index new tire, take old right rear along with getting the old right front tire, and take back to wall, get new left side tire, index tire, clean grill.
- d. Jack man – travel to the right, peg pump, index right front tire, drop jack on right, travel to the left, peg pump and bump, index left rear tire, drop car.
- e. Fueler – fuels car, control left rear tire.
- f. Rear changer – travel to the right, 5 off, pull tire, 5 on, travel to the left, 5 off, pull tire, 5 on.
- g. Catalog Description: Students enrolled at Pit Crew U, participating in Pit Crew Fundamentals, will experience a comprehensive course over 8 weeks that will provide them with the necessary knowledge and skills needed to seek employment as a Motorsports pit-crew athlete. The subject areas include Motorsports pit-stop rules, pit-stop choreography, front changer, carrier, jack man, fueler, and rear changer. These aforementioned subject areas are also job titles. Sources of employment range greatly among all divisions of racing that require pit-stops.
- h. Curriculum Model

## **ADVERSE WEATHER POLICY**

Students will be notified of any school closing by 2:00pm on the day of class.

## **GRADING AND CERTIFICATE OF COMPLETION**

Students who meet attendance, classroom, and physical assessment class requirement will receive a Certificate of Completion

### **COURSE GRADING SCALE**

Pit Crew U will be graded on four (4) standards:

- Attendance
- Classroom Tests/Quizzes
- Athletic Performance



- Pit Stop Performance

## **ATTENDANCE**

It is essential in the pursuit of a successful education that absenteeism is kept to an absolute minimum. Therefore, all absences, tardies and early leaves will be recorded, regardless of the reason. There are no excused absences from scheduled class days (except for campus closures for weather or emergency-oriented issues), tardies or early leaves. Due to the nature of our classes, we do not grant any leave of absence, excused absences, or make-up work. If you are absent from class for more than three days during your eight-week program, you will be disqualified to continue your current class and **will** be allowed to re-enroll in the program during the next twelve months at no additional cost. Arriving to class at least 15 minutes late results in one tardy. In the event of tardiness, two tardies will equal one full day absence.

## **Classroom Tests/Quizzes**

There will be in class tests and quizzes, which will allow the instructors to evaluate the pit crew student's course knowledge as the class continues to add new objectives to the outside performance. This grade will come from a cumulative average at the end of the course. These tests and quizzes will be distributed at the beginning of class, following classes where new course material has been learned. Instructors will never give a test or a quiz within the same class or day that new material has been taught.

This allows forty- eight (48) and up to one hundred and twenty (120) hours to prepare for upcoming evaluations. The tests/quizzes will be graded on a ten (10) point scale:

- A - 100-90
- B - 89-80
- C - 79-70
- D- 69-60
- F - 59 or >

## **Athletic Performance**

At the beginning of every Pit Crew U course, pit crew students will undergo an extensive fitness test on the second (2<sup>nd</sup>) night of class. During the eight (8) week course, pit crew students will spend the majority of their time in an active role around the car and learning proper technique not only with position specific objectives, but athlete objectives. The students will be advised on dynamic mobility, speed, and agility, closed kinetic movements with body weight, conditioning, and proper athlete nutrition. Within the active roles around the car, the student will participate in a large volume of sports specific resistance training that will better prepare them for their job on the car and for their end of course fitness testing, which will establish their grade within this domain. At the end of the eight (8) weeks the student will be re-evaluated and graded on their athletic performance within these fitness tests.

The individual fitness test will be graded individually as follows and will cumulatively add up for an either

“Pass” (A=100 points) or “Fail” (F=0 points). The tests and individual grading are as follows:

### **Athletic Performance Pass/Fail Grading Scale**

Pass = 32-17 Points Fail = 16 or > Points

#### **32 Possible Points**

Improvement = 2 points

Maintained = 1 point

Decreased Performance = -1

#### **Indoor Athlete Testing**

Push Up (AMAP continuously)

Vertical Jump (best of 3)

Long Jump (best of 3)

Sit Reach (best of 3)

Jump Rope (30 sec. – best of 2)

Chest Press

Leg Press

#### **Outdoor Athlete Testing**

Lug Nut Color Reaction (best of 2)

Changer Travel Test (Front – best of 2)

Changer Travel Test (Rear – best of 2)

Jack Man Travel Test (best of 2)

Medicine Ball Carrier Tire Shuttle (best of 2)

15 yd. Sled Pull (total time)

Lug Nut Shuttle (best of 2)

Pro Shuttle [5-10-5] (best of 2)

300 Shuttle

#### **Pit Stop Performance**

Pit Crew U students will be graded by their performance over the wall on their last classes live stops. The over the wall performance will be graded by a front only and a rear only pit stop per pit crew student per night of live stops. The pit stop will include one (1) jack person, one (1) changer, and one (1) carrier. The pit stop test will be isolated to a front and rear only pit stop format to prevent the other portion of the pit stop from slowing down the result. If for some reason, the students in that current Pit Crew U course do not have the performance needed to supply their own team mates the goal of the stop, then experienced pit crew will be assigned to the student(s) pit stop test to attain the foundation that will be needed for the student to excel.

#### **Pit Stop Performance Grading Scale**

**A = 100**

**B = 89**

**C = 79**

**D = 69**

**F = 59**

### **Pass / Fail Standards**

If a combined average of these domain's results in a "C" average or better along with good standing on attendance in the Pit Crew U course, then the student will pass the course.

If a combined average of these domain's results in a "D" average or worse along with good standing on attendance in the Pit Crew U course, then the student will fail the course with the possibility of one (1) free recycle if the grade attained was at least a "D". A score of an "F" will result in no free recycle.

17 seconds or >	(passing score) (passing score)
17.01 - 20 seconds	(passing score, with possible recycle)
20.01 - 23 seconds	(failing score, with possible recycle) (failing score, no recycle)
23.01 - 26 seconds	
26.01 seconds or <	

### **RECYCLE POLICY**

The recycle option is not a guarantee to any Pit Crew U student.

The recycle will be utilized at the discretion of the Director of Motorsports. If the student misses more than the allotted absences, due to family, medical, or any other major life event, that the General Manager and Director of Motorsports is made aware of then the one (1) free recycle may be utilized.

If the student fails the course due to the grade average, and that average was above an F, then the recycle option could be offered, if the student is on good standings with the instructors and showed constant improvement throughout the course but was unable to receive a passing score.

In either of the above, the student will be advised to recycle with a new upcoming Pit Crew U class at no charge for the first reattempt of the course as long as the course is retaken within one (1) year from the drop date.

If the student fails to complete the Pit Crew U course on the second attempt, then the instructors will advise the student to pursue other options for furthering their education within the pit crew industry.

If the student fails to retake the Pit Crew U course within one (1) year from the drop date, then the student will be responsible for paying the full PCU tuition in full, before their second attempt.

### **COURSE OF STUDY & CLOCK HOURS**

#### **Class Hours Required to Qualify for Certification = 48 Total Hours**

- Motorsports Rules & Regulations – 3 hours
- Pit Stop Choreography – 18 hours
- Pit Crew Selection – 3 hours
- Sponsor Expectations – 1 hour
- Nutrition / Fitness / Conditioning - 17 hours
- Selection and Care of Equipment – 4 hours
- Resume Preparation – 1 hour
- Accounting and Tax Preparation – 1 hour



### PCU - 8 WEEK SCHEDULE

Sunday	Monday	Tues.	Wednesday	Thursday	Fri.	Sat.
<b>Week 1</b>	Orientation		Fitness Testing			
<b>Week 2</b>	Classroom - Choreography		Indexing 12 o'clock Introduce taps +Pegs			
<b>Week 3</b>	Indexing 11 +1's Pulls Taps+Peg (pump)		Taps + Button Switch Peg, Pump,Pull (Travel to LS) Tap Drills			
<b>Week 4</b>	Travel to RS Jack Travel to LS + RS; Air Introduced to changers		Travel to LS			
<b>Week 5</b>	Jack man; Air Continued with Changers		Exchanges with Air Added for Whole PCU Team			
<b>Week 6</b>	Springer Set Exchanges		Prep Night			
<b>Week 7</b>	Drive-In's + Live Stops		Live Stops			
<b>Week 8</b>	Live Stops		Last Night of Live Stops	<b>Exit Interviews</b> (Director of Motorsports & Coaches)		

### CLASS MATERIALS NEEDED

- Pit Crew U T-shirt (will be provided)
- Pit Instruction & Training ball cap
- Black pants
- Cross Trainer or Basketball type shoes
- Gloves
- Safety Glasses
- Kneepads
- Ear Plugs (will be provided)

- Helmet

### TUITION REFUNDS

Due to the experiential nature of the class, required equipment, and content, Pit Instruction and Training, LLC requires payment of the Application Fee and Program Fee in full prior to the scheduled start date of the program. People unable to complete the program due to medical or personal issues have twelve months to re-enroll in the program at no additional cost.

When a reimbursement of the Program Fee is necessary, the appropriate fees are processed and reimbursed by a company check to the person making the original payment. Fee reimbursement applies as stated below for those who pay the entire Program Fee in full prior to the scheduled start date as well as those who choose the available Payment Plan. Those who select the payment plan will be reimbursed for the amount they've paid at time of withdrawal, less the prorated amount as spelled out below.

REFUND POLICY WRITTEN NOTICE MUST BE RECEIVED AMOUNT OF FEES ELIGIBLE FOR REIMBURSEMENT:

- Prior to the start of class 1: 100% refund
- Prior to the start of class 2: 100% refund (minus cost of equipment, gear and/or application fee)
- After class 2 and before class 5: 80% refund
- After class 5 and before class 7: 60% refund
- After class 7 and before class 9: 50% refund
- After class 9: 0% refund

### PIT CREW U FEES

Persons enrolling in the Pit Crew U program are required to submit a completed application along with a non-refundable Application Fee due at the time of application. In addition, a Program Fee to cover all associated costs of the program is due prior to the start date of the scheduled program. There is also an optional PCU Payment Plan\* that may be selected.

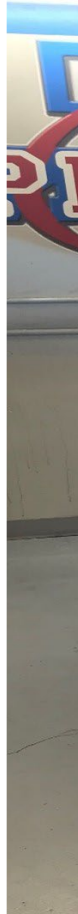
- Application Fee / Deposit \$500.00 due at application
- Pit Crew U Program Fee \$2,050.00 due prior to startdate
- \*Pit Crew U Payment Plan \$1,000.00 due prior to startdate

### PIT CREW U PAYMENT PLAN TERMS

When the PCU Payment Plan is selected, the total cost for Pit Crew U is \$2,725.00.

A \$1,500.00 dollar deposit (including the application fee) is required *on or before the first night of class*. Seven (7) payments of \$175.00 per week are due every Monday before the start of class.

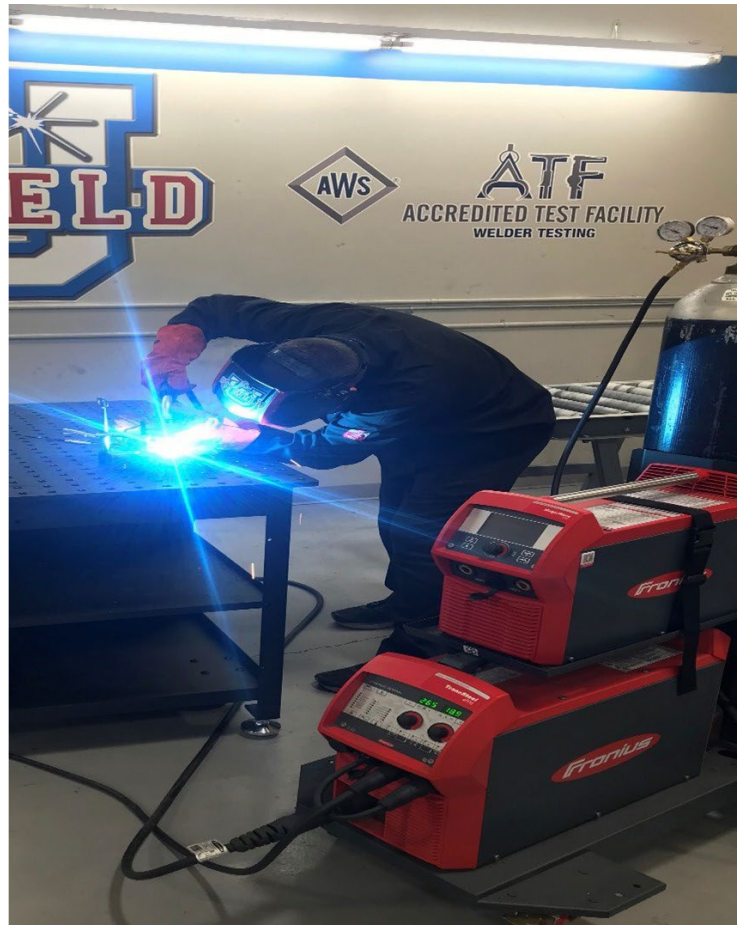
Pit Weld U – 100  
Pit Weld U - 150  
Pit Weld U – 200  
Pit Weld U – 300  
Pit Weld U – 400/450  
Pit Weld U – 500



## School Catalog

Volume 9.0 – Revised 2025.2.4

# 2025 - 2026



**A**chieve your dream career as a welder/fabricator through Pit Weld U. Enroll today and put yourself on the fast track to the job you've always wanted!

PIT Instruction & Training, LLC 156 Byers Creek Road  
Mooresville, NC 28117

Phone: 704-799-3869

[www.VisitPIT.com](http://www.VisitPIT.com)



Pit Instruction and Training is an Accredited Testing Facility for the:





## INTRODUCTION

**Pit Weld U – 100** provides the training necessary for students to learn the skills required to be proficient in welding safety, metal cutting, gas metal arc welding (GMAW) and gas tungsten arc welding (GTAW) welding disciplines. This makes for well-rounded graduates who are not only capable of producing quality cuts and welds on various types of metals, but who can also understand welding drawings and symbols as well as workplace requirements such as basic equipment maintenance, presentation, and professionalism. Tuition includes an AWS Certified Welder Test (D1.3 code, multiple position 10ga mild steel test; student choice for GMAW or GTAW), OSHA-10 Certification and AWS Student Membership.

**Pit Weld U - 150** introduces the student to safety, proper set up and operation to be used with the gas metal arc welding process (MIG); flux core arc welding (FCAW); and proper set up of vertical band saw and horizontal band saw cutting systems. This course also covers the safety and operation of OXY Fuel cutting equipment. Topics include safety, equipment set up, light repair and operation of equipment. Upon completion, the student should be able to properly use the equipment to make industry acceptable welds, flat plate, round, and box tubing made of mild carbon steel; set up and use equipment to make industry-acceptable welds on various materials of various configurations; and set up and properly assemble weldments in accordance with AWS D1.1 Structural Code-Steel.

**Pit Weld U-200** introduces students to safety, proper set up and operation of equipment to be used with the shielded metal arc welding process (SMAW); And proper set up and operation of oxy-acetylene, plasma-arc, vertical band saw and drop-down band saw cutting systems as well as belt sander and electric grinders. Topics include safety, equipment setup, basic maintenance, light repair, and operation of equipment as well as basic blueprint interpretation. Upon completion, the student should be able to properly use the equipment to make industry-acceptable welds on carbon steel plate; set up and use equipment to make industry-acceptable welds on various materials and configurations; and set up and properly operate aforementioned types of cutting systems. Tuition includes an AWS Certified Welder Test (D1.1 code, single position 3/8" or 1" carbon steel plate test; student choice for plate thickness and test position), OSHA-10 Certification and AWS Student Membership.

**Pit Weld U – 300** is a fabrication class focused on educating students on various types of equipment commonly used in metal working shops. Course content introduces students to general metal fabrication techniques and safety and proper setup and operation of a sheet metal brake, tubing bender, bead roller, shrinker stretcher and more. Students will utilize the MIG and TIG welding processes, plasma arc and vertical and horizontal band saw cutting systems covered in the Pit Weld U – 100 curricula. Pit Weld U – 100 is a pre-requisite for this course, however applicants may test-out of the Pit Weld U-100 course via successful completion of a proficiency test.

**Pit Weld U – 400/450** courses focus on welding techniques that apply to pipe applications. Topics include pipe fit up, beveling, weld positions, joint geometry, and preparation with emphasis placed on bead application, profile, and discontinuities. Upon completion, students should be able to perform welds using the SMAW and GTAW process to applicable codes on carbon steel pipe with prescribed electrodes in various positions. Students will also utilize oxy-acetylene torch and horizontal band saw cutting systems covered in the PWU-200 curricula. PWU-200 and PWU-500 (print reading) are pre-requisites for this course, however applicants with prior experience or education may test-out of that course via successful completion of a proficiency test. The 16-week course is limited to twelve (12) students and takes place on Tuesday and Thursday evenings from 5pm - 10:30pm. Tuition includes an AWS Certified Welder Test (D1.1 code, single position 2" or 6" Sch. 80 carbon steel pipe test; student choice for pipe diameter and test position).

**Pit Weld U – 500** introduces the basic symbols and specifications used in welding. Emphasis is placed on interpretation of lines, notes, welding symbols, and specifications. Upon completion, students should be able to read and interpret symbols and specifications commonly used in welding. The classroom-based course is eight weeks in length on Tuesday and Thursdays from 1pm - 4pm or 5pm-8pm (varies by semester).

## ACADEMIC CALENDAR

### 2025 Pit Weld U Schedule

<u>Date</u>	<u>Course</u>	<u>Designation</u>	<u>School Holidays</u>
January 6 to April 23, 2025	PWU-100	M/W Night	April 21 (Easter Monday)
January 6 to February 26, 2025	PWU-300	M/W Night	None
March 3 to April 23, 2025	PWU-150	M/W Night	April 21 (Easter Monday)
March 3 to April 23, 2025	PWU-500	M/W Night	April 21 (Easter Monday)
January 6 to April 24, 2025	PWU-200	Tu/Th Night	None
January 6 to April 24, 2025	PWU-400/450	Tu/Th Night	None
April 28 to August 20, 2025	PWU-100	M/W Night	May 26 (Memorial Day)
April 28 to June 18, 2025	PWU-300	M/W Night	May 26 (Memorial Day)
June 23 to August 20, 2025	PWU-150	M/W Night	July 3 (Independence Day)
June 23 to August 21, 2025	PWU-500	Tu/Th Night	July 3 (Independence Day)
April 28 to August 21, 2025	PWU-200	Tu/Th Night	July 3 (Independence Day)
April 28 to August 21, 2025	PWU-400/450	Tu/Th Night	July 3 (Independence Day)
August 25 to December 17, 2025	PWU-100	M/W Night	Sept. 1 (Labor Day), Nov. 26 (Thanksgiving)
August 25 to October 16, 2025	PWU-300	M/W Night	Sept. 1 (Labor Day)
October 20 to December 17, 2025	PWU-150	M/W Night	November 26 (Thanksgiving)
October 20 to December 17, 2025	PWU-500	M/W Night	November 26 (Thanksgiving)
August 25 to December 18, 2025	PWU-200	Tu-Th Night	November 27 (Thanksgiving)
August 25 to December 18, 2025	PWU-400/450	Tu-Th Night	November 27 (Thanksgiving)
January 6 to April 23, 2025	PWU-100	M/W Night	April 21 (Easter Monday)
January 6 to February 26, 2025	PWU-300	M/W Night	None

### 2026 Pit Weld U Schedule

<u>Date</u>	<u>Course</u>	<u>Designation</u>	<u>School Holidays</u>
January 5 to April 22, 2026	PWU-100	M/W Night	April 6 (Easter Monday)
January 5 to February 25, 2026	PWU-300	M/W Night	None
March 2 to April 22, 2026	PWU-150	M/W Night	April 6 (Easter Monday)
March 2 to April 22, 2026	PWU-500	M/W Night	April 6 (Easter Monday)
January 5 to April 23, 2026	PWU-200	Tu/Th Night	None
January 5 to April 23, 2026	PWU-400/450	Tu/Th Night	None
April 27 to August 19, 2026	PWU-100	M/W Night	May 25 (Memorial Day), July 5 (Independence Day)
April 27 to June 17, 2026	PWU-300	M/W Night	May 25 (Memorial Day)
June 22 to August 18, 2026	PWU-150	M/W Night	July 5 (Independence Day)
June 22 to August 18, 2026	PWU-500	Tu/Th Night	None
April 27 to August 18, 2026	PWU-200	Tu/Th Night	None
April 27 to August 18, 2026	PWU-400/450	Tu/Th Night	None

## BOARD MEMBERS

Thomas C. DeLoach, Jr.  
Managing Member

Myra R. DeLoach – Partner

## FACULTY

Trent W.P. Schanen – Director of Event Logistics & Welding School Operations

William E Evans – Certified Welding Inspector and Welding Instructor

Rick H Swing – CAWI, Welding Instructor, OSHA Authorized Trainer

Paige Hoose – Welding Automation Specialist and Welding Instructor

John M Lott – Welding Instructor

Trevor J Giles – Welding Instructor

## ENROLLMENT QUALIFICATIONS

The school shall require graduation from a public or private or state registered home high school as a prerequisite to enroll in a certificate or diploma course offered by the school. Exceptions to this requirement may be made for students who hold a certificate of high school equivalency or for non-high school graduates who are 18 years of age or older who have taken the TABE (Test of Adult Basic Education), required by the State of North Carolina. A copy of the high school equivalency certificate or test results shall be kept in each student's record. The school shall not permit students if high school age to attend the school during the time that high schools are in regular session, except in individual cases approved by the student's high school principal.

## ENROLLMENT PROCESS

Persons enrolling in the Pit Weld U program are required to submit a completed application along with a non-refundable Application Fee due at the time of application. Additionally, a Program Fee to cover all associated costs of the program is due **prior** to the start date of the scheduled program unless the payment plan is selected. Due to the experiential nature of the class, required equipment, and content, Pit Instruction and Training, LLC requires payment of the Application Fee and Program Fee in full prior to the scheduled start date of the program for those who do not select the payment plan as spelled out in the Application.

Students may enroll any time prior to the set enrollment deadline for each class, which is determined by Pit Instruction and Training, LLC.

## ELIGIBILITY REQUIREMENTS

Pit Instruction and Training, LLC reserves the right to refuse admission to any applicant if it is necessary to protect the safety of the applicant or other individuals in the program or employed by PIT. Admission may be refused to an applicant when there is reasonable belief that there may be an imminent and significant threat to the applicant or other individuals during the period of the Pit Weld U program.

## GRANTING CREDIT

Due to the specific nature of our industry, we do not accept any type of prior educational or work experience as credit towards any Pit Weld U programming.

## CODE OF CONDUCT

Pit Instruction and Training, LLC reserves the right to impose a variety of disciplinary actions, including permanent termination from school, on any student whose behavior—on or off campus—violates the Code of Conduct outlined in this Catalog. To clarify, school administrators will determine in their sole discretion if the Code of Conduct has been violated. Disciplinary action may be taken under this Code of Conduct regardless of whether that conduct also involves an alleged or proven violation of law. Specific instances of misconduct include, but are not limited to the following:

### Drugs & Alcohol

Drug use, substance abuse or possession of drugs, drug paraphernalia or alcohol while on or off Pit Instruction and Training property or during school activities is not tolerated. As a condition of acceptance, Pit Instruction and Training students agree to random and for-cause drug testing throughout their attendance as set forth in Pit's Substance Abuse Prevention Policy included in this guide.

### Guns and Weapons

Possession of guns or weapons on campus (in parking lots, vehicles, etc.) is not permitted. Any knife with a blade longer than 2 inches is considered a weapon and not permitted on campus.

### Illegal Actions

Any action in violation of federal, state, or local laws on or off campus is not tolerated.

**Disruptive Behavior**

Any type of disruptive behavior is not tolerated. Disruptive behavior includes, but is not limited to, obscene language, profanity, derogatory comments, racial or sexist remarks, sleeping in class, or leaving the classroom or shop area without permission.

**Fighting**

Bullying, harassment, fighting, manufacturer bashing, threats or other acts of violence between students or directed toward Pit Instruction and Training staff is not tolerated on or off campus.

**Vandalism**

Vandalism of School or personal property of students or staff on or off campus is not tolerated.

**Theft**

Stealing or possessing stolen property on or off campus is not tolerated.

**Possession of Stolen Property**

Possessing property known to be stolen that may be identified as property of Pit Instruction and Training or any other person or business is not tolerated.

**Destruction of Property**

Destruction of School or personal property of students or staff on or off campus is not tolerated.

**Civil Disturbance**

Any conduct that involves disturbing the peace of the School and/or the local community is not tolerated. Disturbing peace under such circumstances can be defined as, but is not limited to, disorderly conduct and failure to comply with the directives of law enforcement or Institute officials. This includes loud exhaust and stereos.

**TRANSCRIPTS**

Pit Instruction and Training, LLC maintains a full record of all course attempts for each student. Only the student's successfully completed courses will appear on the official transcript. However, all attempts will be reflected within each student's records. Within four weeks of graduation, each student will receive two copies of his or her official transcript and certificate. Additional certified copies may be obtained anytime thereafter for a nominal charge by contacting the school. Unofficial transcripts are available free of charge. The school reserves the right to not issue or award graduation documents and transcripts to a student until all financial obligations to the school have been satisfied.

**CURRICULUM**

**Pit Weld U - 100:** Job Competencies – There are several key areas an individual must be well versed in to be a professional welder/fabricator. The areas are as follows:

1. **Understanding welding symbols:** Students will learn how to read and interpret welding symbols used in drawings and be able to apply knowledge to perform specific welding of a joint.
2. **Equipment safety and setup:** Students will learn proper safety techniques allowing for proper equipment setup and operation creating safe classroom and workplace environments necessary on the job.
3. **Metal cutting / basic fabrication:** Students learn proper procedures involving measurement of metals, as well as different types of cuts associated with specific welding procedures needed to create proper penetration and fusion of metals.
4. **GMAW - Gas Metal Arc Welding (MIG):** Students will learn the process behind MIG welding in which metals melt and are thus joined together using necessary welding equipment including the welding gun and tip, proper wire types and power unit.
5. **GTAW - Gas Tungsten Arc Welding (TIG):** Students will learn the more complex process behind TIG welding in which metals melt and are thus joined together using necessary welding equipment including the torch, tungsten.

**Pit Weld U – 150:** Job Competencies – There are several key areas an individual must be well versed in to be a welder in industrial manufacturing. The areas are as follows:

1. **Equipment safety, setup, and maintenance:** Students will learn proper safety techniques allowing for proper equipment setup, operation and light maintenance items on welding and cutting equipment, creating safe classroom and workplace environments necessary on the job.
2. **Metal preparation & fit-up:** The curriculum ensures that students learn the importance of preparation and fit-up of piping on various joint designs before beginning welding. This requires students to have a knowledge of blueprint reading and interpretation covered in the Pit Weld U – 100 and 500 courses.
3. **GMAW-Spray Arc:** Relying on the skills developed in the Pit Weld U – 100 courses, students continue to hone their skills on a commonly used subvariant of the Gas Metal Arc Welding (GMAW) process. Students must learn to weld 3/8" and greater thickness plate in the flat position on a variety of joint types.
4. **FCAW – Flux Cored Arc Welding:** Students will use the more complex variant of the GMAW process on groove and fillet welds on 3/8" and greater thickness carbon steel in all positions, learning key differences between dual-shielded (shielding gas) and self-shielded FCAW wire.

**Pit Weld U - 200:** Job Competencies – There are several key areas an individual must be well versed in to be a professional structural welder. The areas are as follows:

1. **Understanding welding symbols and blueprint interpretation:** Students will learn how to read and interpret welding symbols used in blueprints utilized on the jobsite and be able to apply knowledge to perform specific welding of a joint in structural applications.
2. **Equipment, safety, setup and maintenance:** Students will learn proper safety techniques allowing for proper equipment setup, operation and light maintenance items creating safe classroom and workplace environments necessary on the job.
3. **Metal cutting techniques:** Students learn proper procedures involving measurement of metals, as well as different types of cuts associated with specific welding procedures needed to create proper penetration and fusion of metals on structural steel plate components.
4. **SMAW - Shielded Metal Arc Welding (Stick):** Students will learn the process behind Stick welding in which metals melt and are thus joined together using necessary welding equipment including the power unit and welding electrode.

**Pit Weld U - 300:** Job Competencies – There are several key areas an individual must be well versed in to be a professional metal fabricator. The areas are as follows:

1. **Equipment, safety, setup, and maintenance:** Students will learn proper safety techniques allowing proper equipment setup, operation, and light maintenance items on fabrication equipment, creating safe classroom and workplace environments necessary on the job.
2. **Metal fabrication equipment operation:** Students will become proficient in the use of plasma-arc, vertical and horizontal band saw cutting systems, English wheel, sheet metal brake, shear, bead roller and shrinker and stretcher – all commonly used equipment in metal fabrication shops industrywide.
3. **GMAW & GTAW welding processes:** Students will learn how to set up and utilize a fixture table to complete labs assigned during class. Assigned labs will require use of the GMAW and GTAW welding processes covered in the Pit Weld U – 100 courses.
4. **Fabrication/production necessities:** Metal fabrication shops must meet tight deadlines while maximizing use of materials to keep costs down. Labs assigned during the course help students understand the importance of minimizing waste to ensure maximum profitability and quality in the field.

**Pit Weld U – 400/450:** Job Competencies – There are several key areas an individual must be well versed in to be a professional pipe welder. The areas are as follows:

5. **Equipment safety, setup, and maintenance:** Students will learn proper safety techniques allowing for proper equipment setup, operation and light maintenance items on welding and cutting equipment, creating safe classroom and workplace environments necessary on the job.
6. **Metal preparation & fit-up:** The curriculum ensures that students learn the importance of preparation and fit-up of piping on various joint designs before beginning welding. This requires students to have a knowledge of blueprint reading and interpretation covered in the Pit Weld U – 200 and 500 courses.
7. **SMAW Welding Processes (Pipe):** Relying on the skills developed in the Pit Weld U – 200 courses, students continue to hone their skills on various diameter and schedule pipe applications using 60 and 70 series electrodes. Students must learn to weld pipe in all positions to prepare for AWS and ASME certifications as required in the industry.
8. **GTAW - Gas Tungsten Arc Welding (TIG):** Students will use the more complex process behind TIG welding in which metals melt and are thus joined together using necessary welding equipment including the torch, tungsten, and filler rod using the lift-arc and scratch-start methods on pipe applications.

**Pit Weld U – 500:** Job Competencies – There are several key areas an individual must be well versed in to interpret engineered drawings and blueprints in the welding and fabrication industries.

1. Identify and read welding symbols.
2. Identify and explain various lines and types, notes, and specifications on a blueprint.
3. Interpret destructive and non-destructive testing symbols and their methods.
4. Develop a working sketch.
5. Create a bill of materials from a blueprint.

## ADVERSE WEATHER POLICY

Students will be notified of any school closing by 7:00am on the day of class for daytime sessions, and 12:00pm on the day of class for evening sessions.

## ATTENDANCE

It is essential in the pursuit of a successful education that absenteeism is kept to an absolute minimum. Therefore, all absences, tardiness and early leaves will be recorded, regardless of the reason. There are no excused absences from scheduled class days, tardiness, or early leaves. Due to the nature of our classes, we do not grant any leave of absence, excused absences, or make-up work. If you are absent from class more than ten percent of the total time during your program, you will be disqualified from continuing your current class and will be allowed to re-enroll in the program during the next twelve months at no additional cost if you have provided ample notification of prior tardies. Arriving at class at least 15 minutes late will result in one tardy. In the event of tardiness, two tardies will equal one full day absence.

## GRADING SYSTEM

Students who meet attendance standards and class requirements will receive a Certificate of Completion or Certificate of Performance.

## COURSE GRADING SCALE

Pit Weld U courses will be graded on five (5) domains:

- Attendance
- Professionalism
- Classroom / Workplace Safety
- Classroom Tests / Quizzes
- Welding Projects



### Classroom Tests/Quizzes

There will be in-class tests and quizzes, which will allow the instructors to evaluate the Pit Weld U student's core knowledge as the class continues to add new objectives. This grade will come from a cumulative average at the end of the course. These tests and quizzes will be distributed at the beginning of class and following classes where new course material has been learned. Instructors will never give a test or a quiz within the same class or day that new material has been taught. This allows forty-eight (48) hours and up to one hundred and twenty (120) hours to prepare for upcoming evaluations. The tests/quizzes will be graded on a ten (10) point scale:

<b>A</b>	100-90
<b>B</b>	89-80
<b>C</b>	79-70
<b>D</b>	69-60
<b>F</b>	59 or >

### Welding Projects

Welding projects will be assigned throughout the duration of each course in which a Pit Weld U student will have ample time to complete. The projects ensure that each student is learning the skills required to pass the course. Assigned projects will include GMAW, GTAW (Pit Weld U-100, 150 and 300), and SMAW and GTAW (Pit Weld U-200 and 400/450) welding techniques and include different types of metals\* (mild steel, aluminum, etc.). Students will be graded on specific criteria related to each project that are clearly spelled out with each lab assignment. Students will be allowed to re-make projects in which they receive a failing grade at the discretion of the instructor if there's reasonable time left during the course. Projects in which a student fails to complete will result in a failing grade recorded as a "zero" for the uncompleted portion.

\*Pit Weld U-100, 150 and 300 students will learn welding techniques on the different types of metals listed above. Pit Weld U-200 and 400/450 students will focus solely on carbon steel metals.

### Pass / Fail Standards

If a combined average of these domain's results in a "C" average or better along with good standing on attendance during either Pit Weld U course, then the student will pass the course.

## COURSE OF STUDY & CLOCK HOURS

### Pit Weld U - 100

- Orientation, professionalism, and workplace expectations – 3 hours
- Proper safety procedures and equipment – 2 hours
- Cutting equipment safety procedures – 4 hours
- Welding equipment safety procedures – 4 hours
- Understanding cutting equipment and tools – 20 hours
- Setting up welding equipment – 5 hours
- Utilizing cutting equipment – 20 hours
- Gas metal arc welding (MIG) – 50 hours
- Gas tungsten arc welding (TIG) – 68 hours

### Pit Weld U - 150

- Orientation, professionalism, and workplace expectations – 3 hours
- Proper safety procedures and equipment – 2 hours
- Cutting equipment safety procedures – 4 hours
- Welding equipment safety procedures – 4 hours
- Welding equipment setup and operation – 5 hours
- Structural Welding Applications (Plate) – 20 hours
- Gas Metal Arc Welding Spray Transfer, Flat Position (GMAW-Spray) – 20 hours
- Dual Shielded Flux Cored Arc Welding, All Positions (FCAW-G) – 42 hours

**Pit Weld U - 200**

- Orientation, professionalism, and workplace expectations – 3 hours
- Cutting equipment safety procedures – 4 hours
- Welding equipment safety procedures – 2 hours
- Operation of cutting equipment and tools – 20 hours
- Setting up welding equipment – 3 hours
- Blueprint interpretation – 9 hours
- Shielded metal arc welding (SMAW) – 94 hours
- AWS D1.1 Certification Testing Preparation – 9 hours

**Pit Weld U - 300**

- Orientation, professionalism, workplace expectations and safety procedures – 4 hours
- Fabrication equipment setup and operation – 18 hours
- Welding equipment safety procedures – 2 hours
- Operation of fabrication and cutting equipment using the GMAW welding process – 37 hours
- Operation of fabrication and cutting equipment using the GTAW welding process – 37 hours

**Pit Weld U – 400/450**

- Orientation, professionalism, workplace expectations and safety procedures – 4 hours
- SMAW welding process overview, welding variables and techniques, identification of joint types & pipe welding defects – 18 hours
- Operation of welding equipment utilizing the SMAW welding process on large diameter heavy wall pipe (6" + outer diameter) – 37 hours
- Operation of welding equipment utilizing the SMAW welding process on small diameter thin wall pipe (2" – 6" outer diameter) – 37 hours
- GTAW welding process overview, welding variables and techniques, identification of joint types & pipe welding defects – 18 hours
- Operation of welding equipment utilizing the GTAW welding process on large diameter heavy wall pipe (6" + outer diameter) – 37 hours
- Operation of welding equipment utilizing the GTAW welding process on small diameter thin wall pipe (2" – 6" outer diameter) – 37 hours

**Pit Weld U - 500**

- Lecture – Identifying welding symbols, blueprint interpretation, identification of different types of lines on a print. – 32 hours
- Lab – Interpretation of destructive and non-destructive testing symbols and their methods and demonstration of said methods. Develop a working sketch. – 32 hours

**CLASS MATERIALS NEEDED**

- Textbook (issued during orientation for the respective class)
- Welding Jacket
- Welding Helmet
- Welding Gloves
- Safety Glasses
- Ear Plugs
- Leather or Steel Toed Shoes or Boots
- Pit Weld U T-Shirt
- Black work pants
- Sharpie and pencil
- Tape Measure

## TUITION REFUNDS

Due to the experiential nature of the class, required equipment, and content, Pit Instruction and Training, LLC requires payment of the non-refundable Application Fee and Program Fee in full prior to the scheduled start date of the program unless the payment plan is selected. People unable to complete the program due to medical or personal issues have twelve months to re-enroll in the program at no additional cost. When a reimbursement of the Program Fee is necessary, the appropriate fees are processed and reimbursed by a company check to the person making the original payment. Fee reimbursement applies as stated below for those who pay the entire Program Fee in full prior to the scheduled start date as well as those who choose the available Payment Plan. Those who select the payment plan will be reimbursed for the amount they've paid at time of withdrawal, less the prorated amount as spelled out below.

*The policy and regulations shall provide for, at a minimum, a full refund if a student withdraws (minus the Application Fee) before the first day of class or the school cancels (Application Fee is refunded if the school cancels, or if the applicant is deemed ineligible) the class and an eighty percent (80%) refund if the student withdraws within the first twenty-five percent (25%) of the period of enrollment for which the student was charged. The refund policy is the same for all courses, however the schedule is different for Pit Weld U – 150, 300 and 500 as they're eight-week courses (Pit Weld U – 100, 200 & 400/450 are 16-week courses).*

### Pit Weld U – 100, 200, 400/450 REFUND POLICY: WRITTEN NOTICE MUST BE RECEIVED TO BE ELIGIBLE FOR REIMBURSEMENT

Prior to the start of class 1:	100% refund
Prior to the start of class 2:	100% refund (minus cost of equipment, gear and/or application fee)
After class 2 and before class 8:	80% refund
After class 8 and before class 11:	80% refund
After class 11 and before class 14:	60% refund
After class 14 and before class 16:	50% refund
After class 16:	0% refund

### Pit Weld U – 150, 300, 500 REFUND POLICY: WRITTEN NOTICE MUST BE RECEIVED TO BE ELIGIBLE FOR REIMBURSEMENT

Prior to the start of class 1:	100% refund
Prior to the start of class 2:	100% refund (minus cost of equipment, gear and/or application fee)
After class 2 and before class 6:	80% refund
After class 6 and before class 8:	80% refund
After class 8 and before class 10:	60% refund
After class 10 and before class 12:	50% refund
After class 12:	0% refund

## PIT WELD U FEES

Persons enrolling in the Pit Weld U program are required to submit a completed application along with a non-refundable Application Fee due at the time of application. In addition, a Program Fee to cover all associated costs of each course is due prior to the start date of the scheduled program. There is also an optional Pit Weld U Payment Plan that may be selected for students who enroll in Pit Weld U courses.

Pit Weld U 100 – 400/450 / Deposit:	\$700.00 due at application
Pit Weld U – 100 Program Fee:	\$3,550.00 due on or before start date
Pit Weld U – 150 Program Fee:	\$2,245.00 due on or before start date
Pit Weld U – 200 Program Fee:	\$3,550.00 due on or before start date
Pit Weld U – 300 Program Fee:	\$2,495.00 due on or before start date
Pit Weld U – 400/450 Program Fee:	\$3,695.00 due on or before start date
Pit Weld U – 500 Program Fee:	\$795 due on or before start date
Pit Weld U Payment Plan (except for PWU-500):	\$600.00 due on or before start date <i>*See terms below.</i>

Fees listed on the previous page are for each respective course. If a student wishes to enroll in multiple courses, the fees as listed above are due for *each* course prior to their respective start dates.

## PIT WELD U PAYMENT PLAN

The Pit Weld U payment plan is available to students enrolling in all welding courses except Pit Weld U - 500. The financing charge for those selecting the payment plan is \$300 per course.

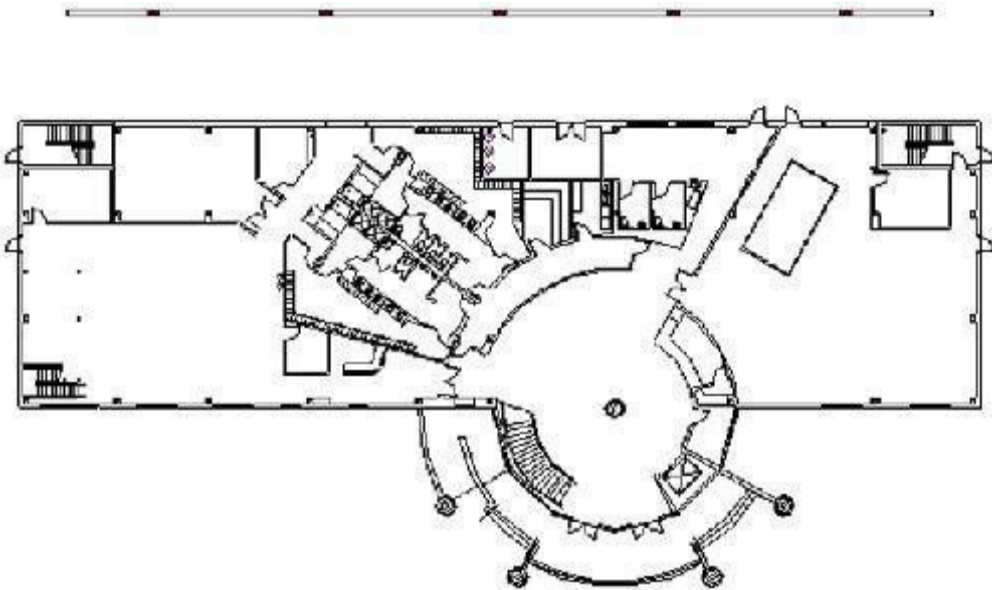
A \$1,300.00 deposit (\$700 application fee + \$600 deposit) is required ***on or before the first night of class.*** The remaining balance is broken into fifteen (15) weekly payments, due every Monday or Tuesday (depending on the session) prior to the start of class during the course. Individuals unable to make the payments will be unable to complete the remainder of the course.



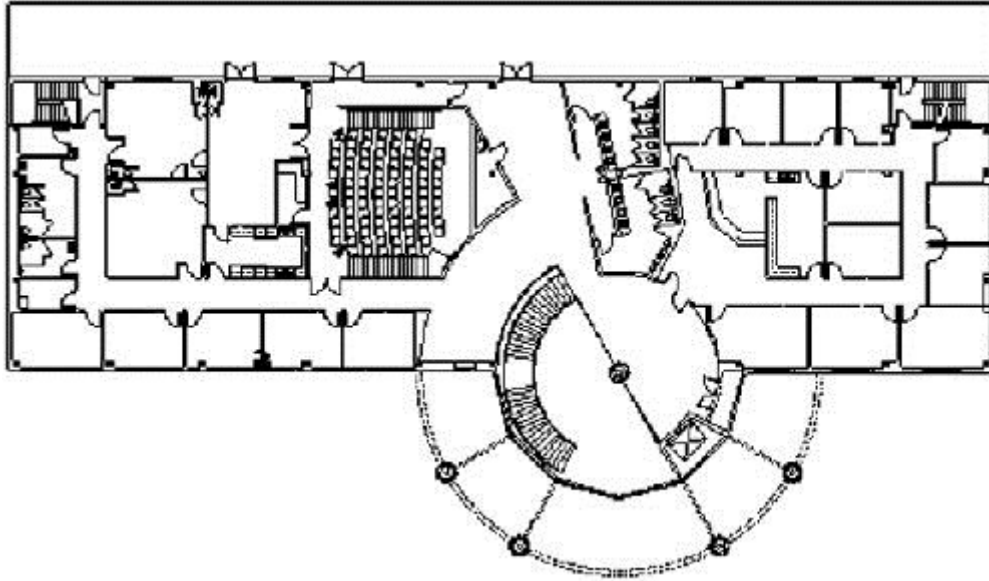
## FACILITIES

One of the most unique venues in the Charlotte region, Performance Instruction & Training (PIT) offers 5.5 acres and 35,000 square feet of possibilities for your next event. From the outdoor track and pit road to the nearly 100 seat theatre, classrooms, and spacious lobby, PIT is diverse enough to offer the flavor of motorsports coupled with a beautiful facility with all the professional amenities of traditional event spaces.

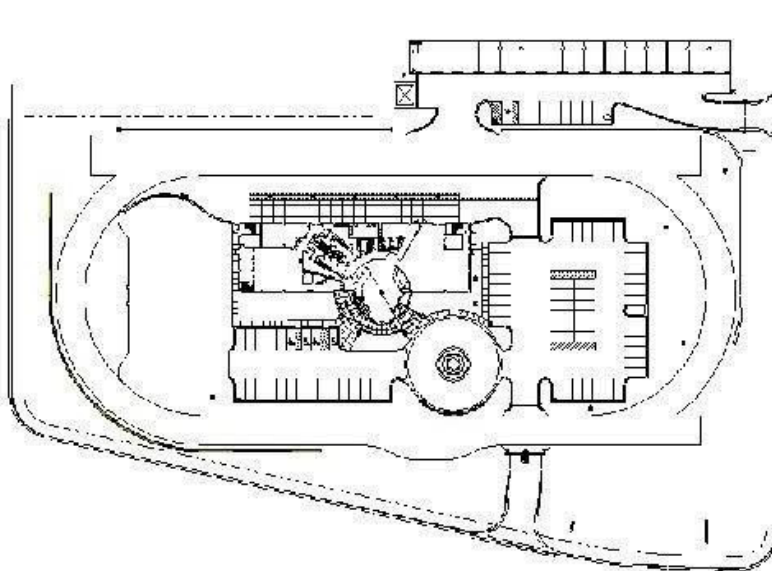
## FACILITY FLOOR PLANS



**First Floor Plan:** Lower Atrium (center), Motorsports Room (right), Fitness Center (left), and men's and women's locker rooms and steam room (middle left).

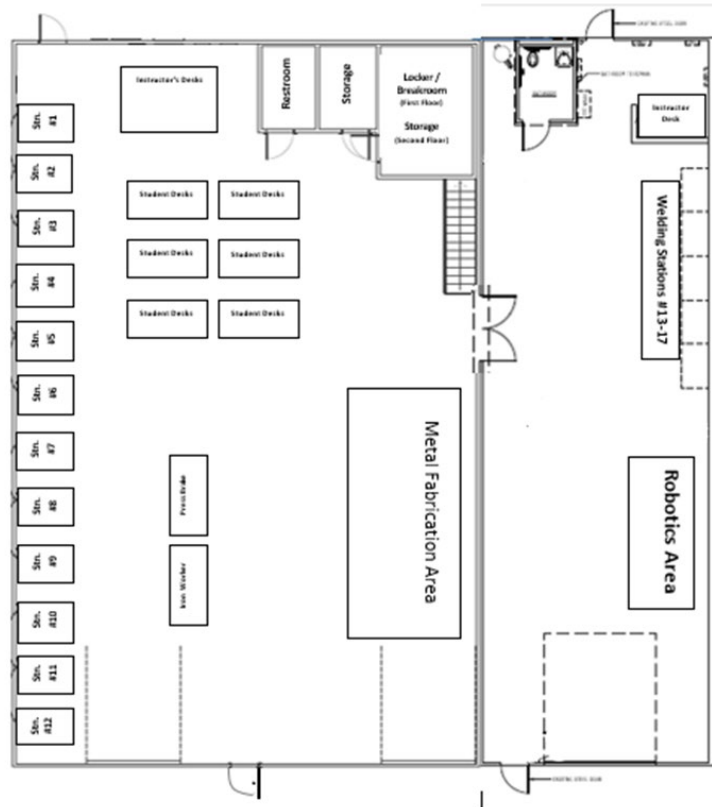


**Second Floor Plan:** Upper Atrium and Pre-function Area (center), Auditorium (center left), Dining, Kitchen, and Group Meeting Rooms (upper left), Private Meeting Rooms and Board Room (bottom left), Outdoor Balcony (top), and Corporate Offices.



**Site Map (above):** Quarter mile track, fifteen garage bays (upper right), grass practice field (left), six pit stalls and pit road (middle top) and parking for visitor cars and buses including handicapped accessibility.





**Welding Lab (above):** Main entrance is the door on the bottom left side of the image; rear entrances are located at the top of the building. Twelve welding booths are located on the left side of the building, with storage room, restroom, and desk/instructor space at the top. Fabrication and cutting equipment located at the right side of the image, with additional material storage in loft at top of stairs. The right side of welding lab includes welding booths thirteen through seventeen, robotics area with collaborative welding robot, additional restroom, materials storage closet, and instructor desk.

## ACKNOWLEDGEMENT

I have carefully read the **Pit Crew U** School Catalog in its entirety, without any time constraints being placed upon me and fully understand and agree to be bound by its contents.

Signature\_\_\_\_\_

Print Name \_\_\_\_\_

Date:

I have carefully read the **Pit Weld U** School Catalog in its entirety, without any time constraints being placed upon me and fully understand and agree to be bound by its contents.

Signature\_\_\_\_\_

Print Name \_\_\_\_\_

Date: